

CLUTCH CABLE CONVERSION, EARLY PEDAL BOX

PEDAL BOX CONVERSION

Remove the clutch pushrod, clevis pin and spring assembly.

Remove the forward brake pedal end-stop locknut (16), see **FIGURE 1**.

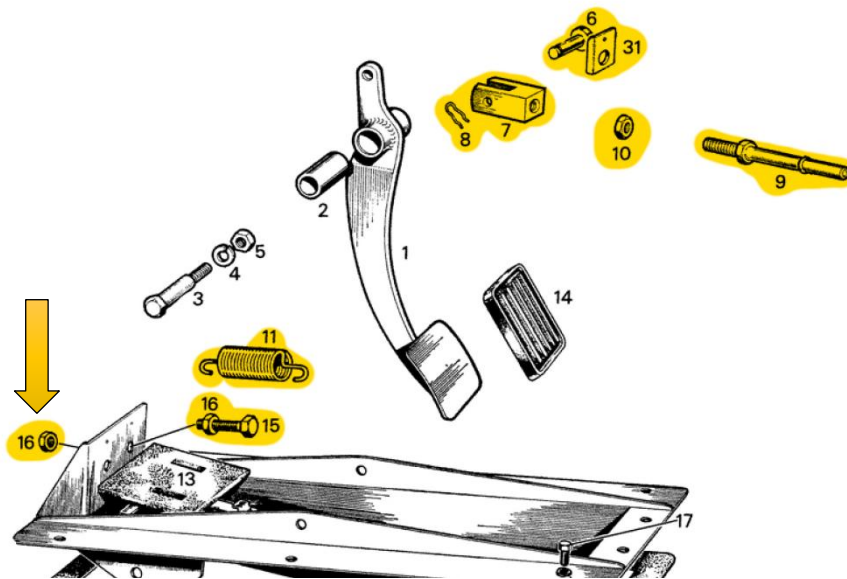


Figure 1: Pedal Box Assembly

Trial fit the clutch cable guide (00334) on the front of the pedal box frame and mark the centre of the guide hole.

A slot can now be cut in line with the mark, through which the clutch cable can pass. See **FIGURE 2: MODIFIED PEDAL BOX FRAME**.

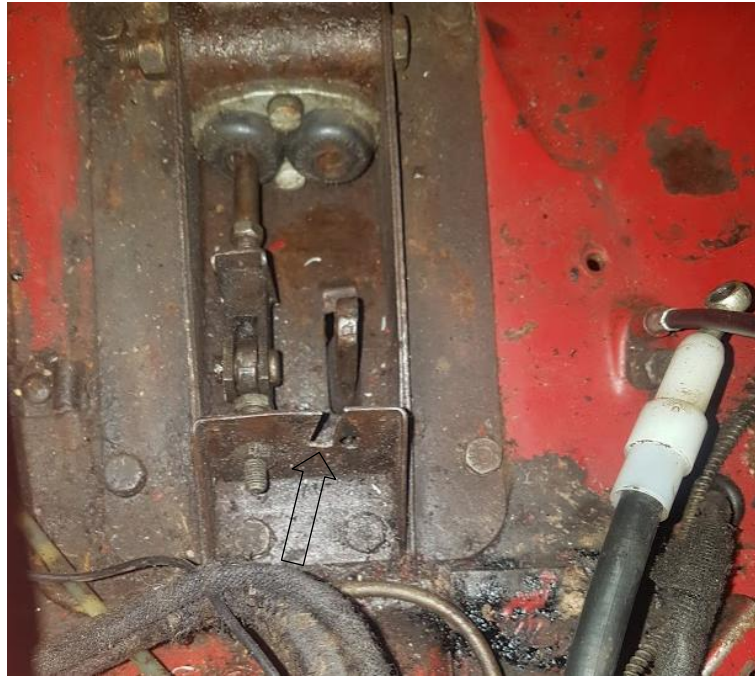


Figure 2: Modified Pedal box frame

Fit the Clutch Cable Guide (00334) and secure by replacing the brake end-stop locknut.

Fit the Clutch Cable Spigot Pin (00192) and secure with the M8 nut (00054). See **FIGURE 3: COMPLETE ASSEMBLY.**



Figure 3: Complete Assembly

CABLE INSTALLATION AND ADJUSTMENT

Wind the lock nuts on the clutch cable fully in to give maximum slack.

Working under the car, feed the threaded end of the cable through the hole in the engine adaptor plate and hook the cable nipple into the slot in the clutch release arm. Ensure the nipple is properly seated in the fork. See **FIGURE 4: FITTED GEARBOX**.

Route the cable through the engine bay avoiding any hazards such as the steering column, throttle controls or wiring and feed through the guide on the pedal box.

Locate the ringed end on to the spigot pin and secure using the E-Clip.

Working back under the car the cable sheath should be pulled through the engine adaptor plate to eliminate any slack and the locking nuts wound out and locked against the adaptor plate. Ensure the nuts are tight to avoid the risk of them coming free during operation.

The cable should have no free play but should also not be applying undue load which would cause riding of the clutch.

Test drive and adjust as necessary.

After the first 1000 miles driving the cable adjustment should be checked as the cable can stretch slightly as it beds in, making gear change more difficult.



Figure 4: Fitted gearbox

REPLACEMENT CABLES

The kit uses a standard Ford Escort Mk1 clutch cable, Ford p/n 1507894.

Replacement / spare cables can be purchased from Barratt Engineering or most good motor factors.