

NISSAN CG TO R7ME

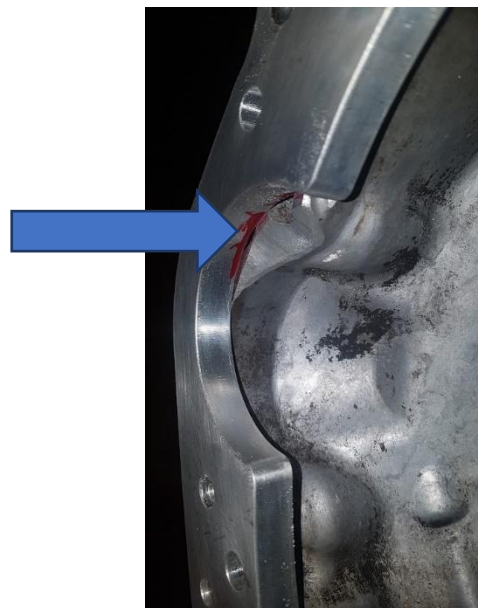
ADDITIONAL MOUNTING HOLE

Attach Drill Jig (00152) to the bellhousing as shown below and drill through with a 10.5mm drill bit.



STARTER MOTOR CLEARANCE

Trial fit the Adaptor Plate (00109) to the bellhousing and mark around the starter motor recess. Material can now be removed until the starter fits flush with the adaptor plate.



CRANKSHAFT POSITION SENSOR CLEARANCE

If the optional crankshaft position sensor is being used additional clearance must be cut into the top of the bellhousing. Care should be taken to ensure the plug can be easily fitted and removed.



NOTES

In all areas where material has been removed it is advised that sharp edges and corners are avoided to reduce the risk of cracking and stress concentration in the casting. Corners are best formed by drilling with a 10mm diameter bit or larger.

180MM CLUTCH

For installations which are retaining the standard Micra flywheel and 180mm clutch kit the release bearing (part 7 below) must be moved towards the engine to allow for full clutch disengagement.

This is achieved by placing a 3mm spacer washer behind parts 11 (clip) and 12 (pivot), see image below.

This is not required when using a Barratt Engineering billet flywheel and 190mm clutch kit.

